

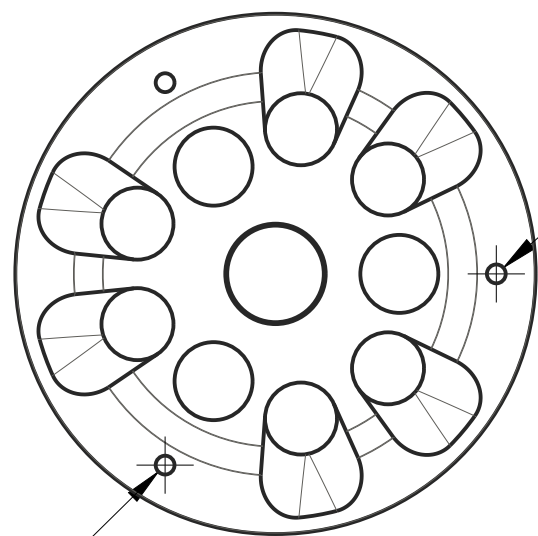
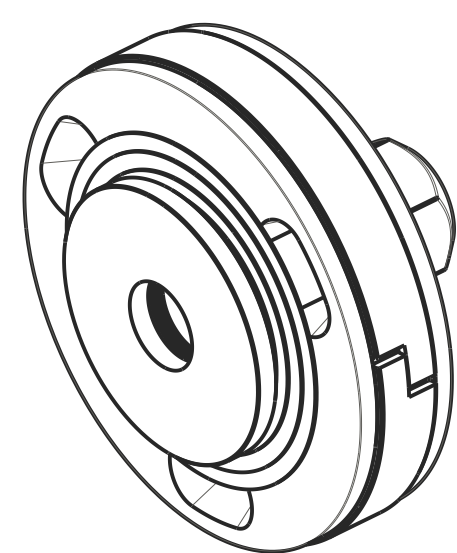
4

3

2

1

REVISIONS				
ZONE	REV	DESCRIPTION	DATE	APPROVED
	A	RELEASE TO PRODUCTION	10/11/17	CR



1X Ø.098 BLEED

1X Ø.098 BLEED

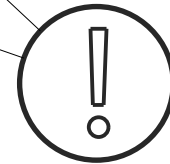
050-01-018

018-00-040

050-01-018

041-12-080-A

041-12-135-A



IMPORTANT: SHARP EDGE TOWARDS PISTON

041-12-095-A

041-12-110-A

002-02-036

029-18-141

222-01-134

041-12-142-A

041-12-160-A

041-12-180-A

041-10-180-A

(.090)
COMPRESSION
STACK HEIGHT

(.084)
REBOUND
STACK HEIGHT

041-10-142-A

041-10-200-A

041-10-110-A

041-10-160-A

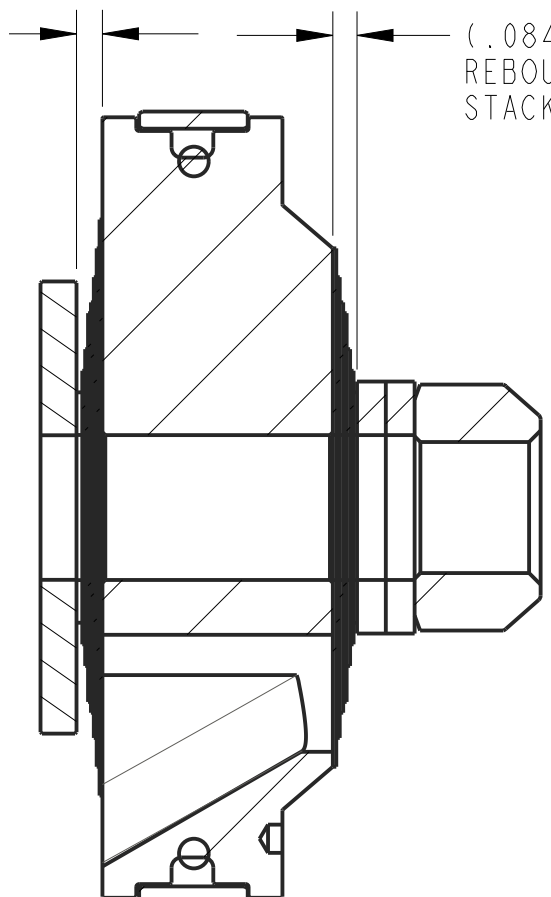
041-10-135-A

041-10-095-A

041-20-080-A

050-00-001

PISTON BLEED SPEC
 DRILLED ON LINE 2X Ø.098"



- NOTES:
 1. REFERENCE: 50/70 (2X .098 BLEED)
 2. FIRST APPLICATION: 3.0 SERIES SMOOTH BODY

- PROPRIETARY -
 THIS DOCUMENT CONTAINS CONFIDENTIAL, PROPRIETARY INFORMATION
 THAT IS FOX PROPERTY. DO NOT DISCLOSE TO OR DUPLICATE
 FOR OTHERS EXCEPT AS AUTHORIZED BY FOX.

UNLESS OTHERWISE SPECIFIED DIMENSIONS ARE IN: INCHES [MM]	PER ASME Y14.5M 1994	
	APPROVALS	DATE
	DWN. BY C RAHDERS	10/11/17
	CHK. BY	
	ENG. C RAHDERS	10/11/17
THIRD ANGLE PROJECTION	MFG.	
	ADD.	
DO NOT SCALE DRAWING		

FOX FOX Factory, Inc.
 130 Hangar Way, Watsonville, CA 95076 USA Ph 831-768-1100
 Fax 831-768-9312

TITLE: Valving Assembly:
 3.0 Factory Series,
 Tuned Combination 602

SIZE DWG. NO. **C** **807-24-602**

PLOT SCALE | .50:1 | SHEET 1 OF 2

4

3

2

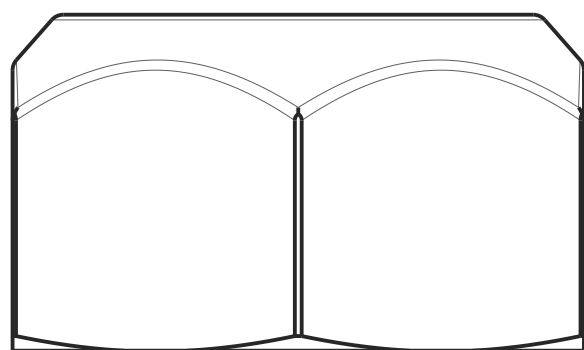
1

4

3

2

1



(2X) BACK UP WASHER



0.800 X .012



0.950 X .012



1.100 X .012



1.350 X .012



1.425 X .012



1.600 X .012



1.800 X .012



2.000 X .010



1.800 X .010



1.600 X .010



1.425 X .010



1.350 X .010



1.100 X .010



0.950 X .010



0.800 X .020



TOP OUT WASHER

D

D

C

C

B

B

A

A

- PROPRIETARY -
 THIS DOCUMENT CONTAINS CONFIDENTIAL, PROPRIETARY INFORMATION
 THAT IS FOX PROPERTY. DO NOT DISCLOSE TO OR DUPLICATE
 FOR OTHERS EXCEPT AS AUTHORIZED BY FOX.

SIZE C	DWG. NO. 807-24-602	REV. A
PLOT SCALE 1.50:1 SHEET		2 OF 2

4

3

2

1